

## LANTERN

# LANTERN-360-HALO-50W-3000K

BL10506510

### OUTDOOR > Street Lighting

360° lantern ideal for parks and residential or community parking. High luminous efficiency. Available on request in 90°. End piece diameter 60 mm.



#### Application domain

- Outdoor Parking
- Outdoor Circulations
- Outdoor lighting



50 W

7000  
lm

IRC  
>80

IP65

3000K

C

#### Electric data

Total power (W)	50
Rated voltage (V)	230V
Distorsion harmonique	-
Power factor	>0.9
Network frequencies	50Hz
Electric class	I
Dimmable	No



FILE UPDATED ON 27/03/2023

## Photometric data

Color temperatures	3000K
Light source type	SMD
Including the light source	Yes
SDCM	SDCM>5
IRC	>80
Safety group (EN62778)	RG1
Luminous flux (lm)	7000lm (3000K)
ULOR	-

## Technical data

Diameter (mm)	380
Height (mm)	79
Recessed diameter (mm)	-
Weight (kg)	3.82
Recessed depth under BA13 (mm)	-
Cable length	90 cm
Product color	Gray RAL 7035
IK Code	IK08
Incandescent wire test	650°C
IP Code	IP65
Use temperature range	-20... +45°
Body material	Aluminium
Diffuser material	PC
Driver included	Yes
Recoverable	Non recouvrable



FILE UPDATED ON 27/03/2023



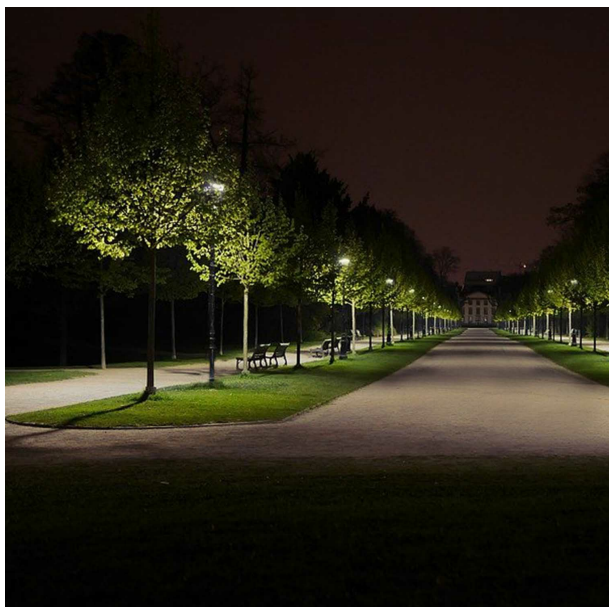
## Liefe time

L80 à 25°	50 000 h
-----------	----------

## Supplementary data

Warranty period	5 years
Light beam spread	120°
Tiltable	No
Connection type	Fil à connecter

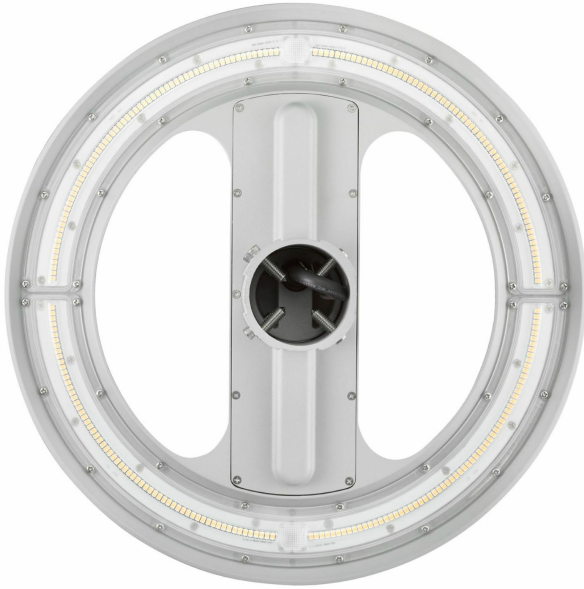
## Atmosphere



## Other



FILE UPDATED ON 27/03/2023



FILE UPDATED ON 27/03/2023