

SOLAR

SOLA APPLIQUE SOLAR 2.2W-3000K-DETEC

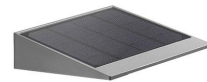
PL17085401

OUTDOOR > Outdoor Wall Light

OUTDOOR > Solar

SOLAR > Solaire

Wall lamp and LED solar bollard in aluminium, equipped with a detection system 30% in standby and 100% in HF detection. exterior lighting. SOLA range: No electrical installation required!



Application domain

- Outdoor residential
- Garden
- Outdoor illumination
- Outdoor Parking
- Outdoor Circulations
- Outdoor lighting



Electric data

Total power (W)	2.2
Rated voltage (V)	3.7Vdc
Distorsion harmonique	-
Power factor	>0.9
Network frequencies	50Hz , 60Hz
Electric class	III
Dimmable	No

Photometric data

Color temperatures	3000K
Light source type	SMD
Including the light source	Yes
SDCM	SDCM>6
IRC	>80
Safety group (EN62778)	RG0
Luminous flux (lm)	250lm (3000K)
ULOR	-

Technical data

Dimensions (mm)	190 x 140 x 46
Weight (kg)	0.78
Recessed depth under BA13 (mm)	-
Cable length	-
Product color	Grey
IK Code	IK08
Incandescent wire test	650°C
IP Code	IP54
Use temperature range	-20... +45°
Body material	Aluminium
Diffuser material	PC
Sensor	Haute fréquence
Driver included	No

Supplementary data

Warranty period	2 years
Light beam spread	90°
Tiltable	No
Connection type	Solar without connexion

